




# ASSEMBLY INSTRUCTIONS

## CROWNMARK : B4300-1 DRESSER

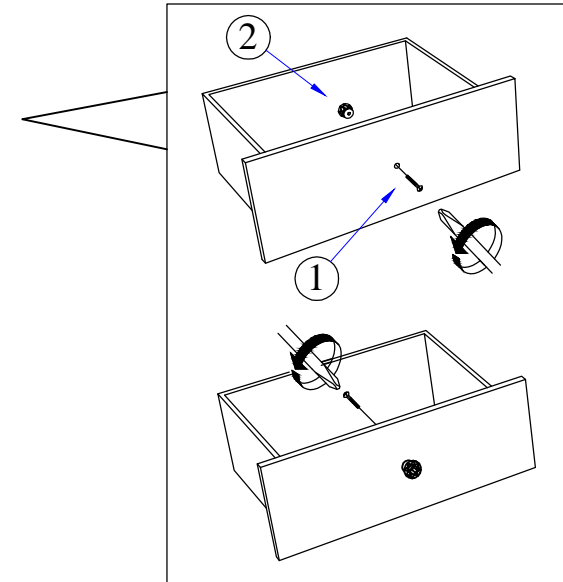
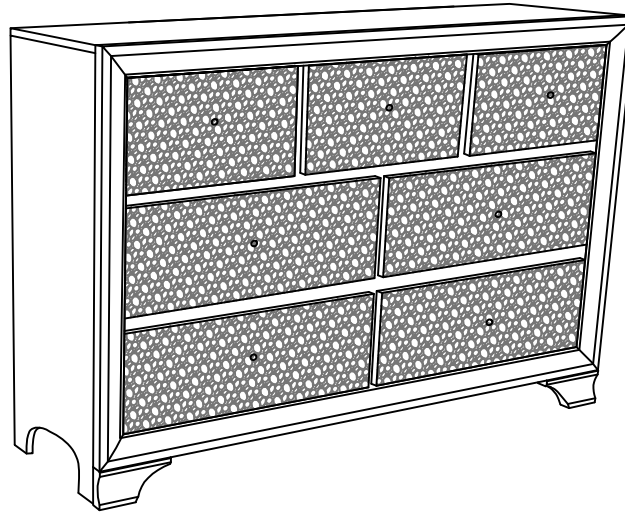
### (BOX 1) BOX OF DRESSER

NO	ITEM	QTY
	DRESSER	
A		1 PC

### (BOX 1) HARDWARE LIST

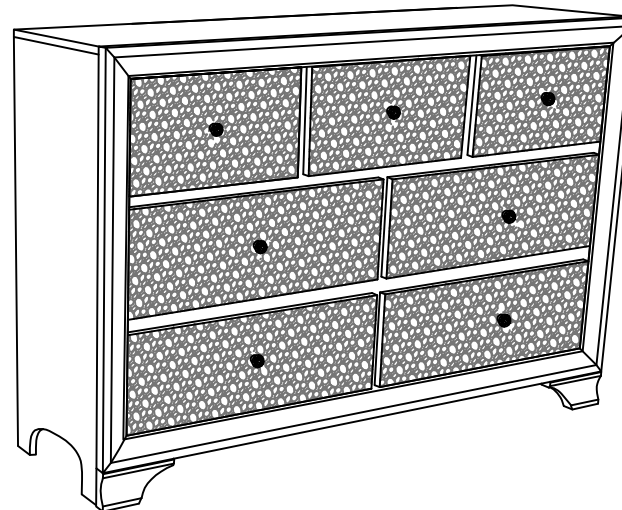
NO	ITEM	QTY
1	Truss Head Machine Screw m4x28mm Blk 	7 PCS
2	HANDLE 	7 PCS

**STEP 1 :** Remove HANDLE ( 2 ) using a Philips head screw driver as shown in illustration STEP - A. Re-install the HANDLE ( 2 ) as per diagram STEP - B. Repeat STEP - A STEP - B until HANDLE ( 2 ) are attached correctly.



STEP - A

STEP - B



**COMPLETED ASSEMBLY**

NOTE : MUST TIGHTEN SCREWS PERIODCALLY OR SCREWS WILL BECOME LOOSE.CHECK TIGHTNESS OF ALL SCREWS EVERY 6-8 WEEKS.

# ASSEMBLY INSTRUCTION

## CROWNMARK : B4300-1/B4300-11 DRESSER & MIRROR

### (Box 1)

#### BOX OF MIRROR

NO	ITEM	Qty
A	MIRROR	1 PC
B	MIRROR SUPPORT RAIL	2 PCS

### (Box. 2)

#### BOX OF DRESSER

NO	ITEM	Qty
C	DRESSER	1 PC

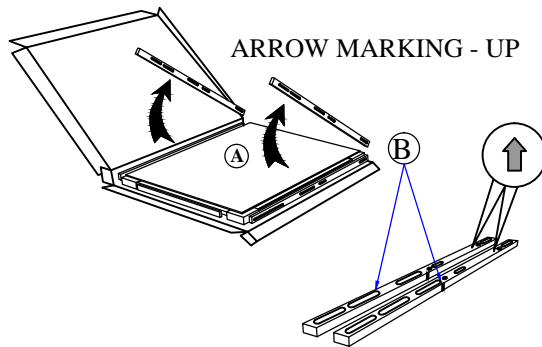
### (Box. 1)

#### HARDWARE LIST

NO	ITEM	Qty
1	JCBC BOLT M6 x 35MM BLK	8 PCS
2	SPRING WASHER 1/4" RBW	8 PCS
3	FLAT WASHER 1/4" ID x 19mmOD BLK	8 PCS
4	ALLEN KEY m4 x 65mm BLK	1 PC

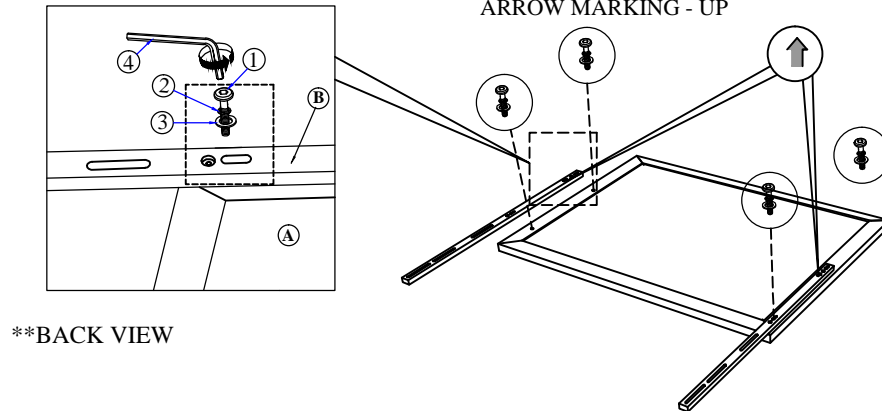
### STEP 1

Take out mirror support (B) from the carton box.

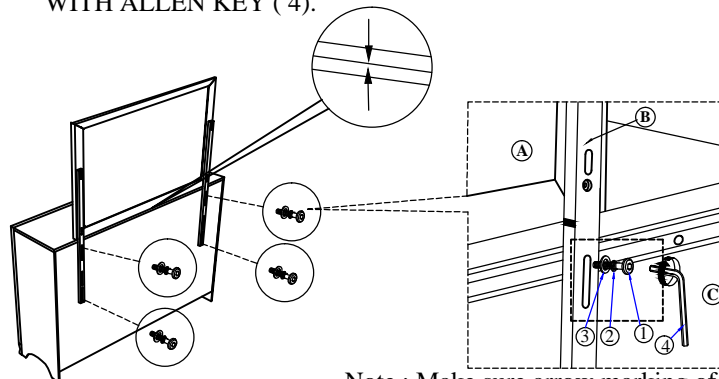


**STEP 2 :** Align & fasten mirror support (B) to the back of mirror (A) using short JCBC bolt(1),spring washer (2) & flat washer (3). **DO NOT FULLY TIGHTEN AT THIS STEP.**

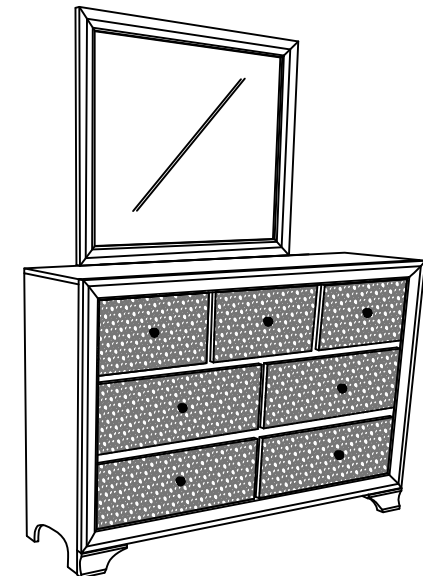
Note : Make sure arrow marking of the mirror support (B) is aligned up.



**STEP 3 :** Place mirror (A) on top of dresser (C). Align & fasten mirror support (B) to the back of dresser (C) using long JCBC bolt (1) , spring washer (2) & flat washer (3) THEN FULLY TIGHTEN ALL THE BOLTS AT STEP 2 & 3 WITH ALLEN KEY ( 4).



Note : Make sure arrow marking of the mirror support is aligned with the arrow marking of the center of the dresser as shown in drawing.



COMPLETED ASSEMBLY

NOTE : MUST TIGHTEN SCREWS PERIODCALLY OR SCREWS WILL BECOME LOOSE.CHECK TIGHTNESS OF ALL SCREWS EVERY 6-8 WEEKS.